

4125

SIDE SCAN SONAR SYSTEM

FEATURES

- Ultra high resolution images
- Lightweight for one person deployment
- Standard heading, pitch, roll & pressure sensors
- Choice of dual simultaneous frequencies
- Runs on AC or DC
- Pole mount option for shallow water use

APPLICATIONS

- Hydrographic Surveys
- Geological Surveys
- Search & Recovery
- Channel/Clearance Surveys
- Bridge/Pier/Harbor Wall Inspection
- Hull Inspections



EdgeTech's 4125 Side Scan Sonar System was designed with both the Search & Recovery (SAR) and shallow water survey communities in mind. The 4125 utilizes EdgeTech's Full Spectrum® CHIRP technology, which provides higher resolution imagery at ranges up to 50% greater than non-CHIRP systems operating at the same frequency. This translates into more accurate results and faster surveys, thus cutting down on costs.

Two dual simultaneous frequency sets are available for the 4125 depending on the application. The 400/900 kHz set is the perfect tool for shallow water survey applications, providing an ideal combination of range and resolution. The 600/1600 kHz set is ideally suited for customers that require ultra high resolution imagery in order to detect very small targets (SAR).

The 4125 system can be powered by both AC and DC for added versatility and is delivered in portable rugged cases for ease of transport from site-to-site. As is standard with all of EdgeTech's towed side scan systems, the 4125 comes with a safety recovery system which will prevent the loss of a towfish if it becomes snagged on an obstacle during a survey.

A standard 4125 System comes with a rugged stainless steel towfish and a portable water resistant topside processor including a splash-proof, drop and shock resistant laptop computer. A 50 meter Kevlar tow cable is included as standard with customer-specified lengths also available. Multiple options are available such as a v-fin depressor, keel weight, pole mount and hull scan bracket for added versatility.



For more information please visit EdgeTech.com

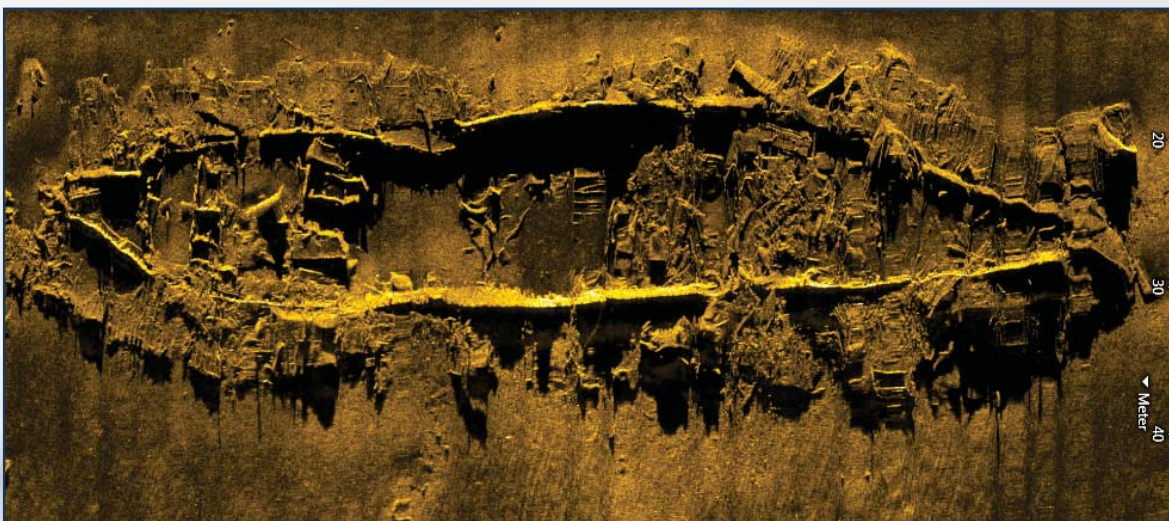
info@EdgeTech.com | USA 1.508.291.0057

4125

SIDE SCAN SONAR SYSTEM

KEY SPECIFICATIONS

| SONAR | |
|---------------------------------|---|
| Frequencies (Dual Simultaneous) | Choice of either a 400/900 kHz or 600/1600 kHz towfish |
| Pulse Type | EdgeTech's Full Spectrum® CHIRP (user-selectable CW pulses also included) |
| Operating Range | 150m @ 400 kHz, 75m @ 900 kHz; 120m @ 600 kHz, 35m @ 1600 kHz |
| Horizontal Beam Width | 0.46° @ 400 kHz, 0.28° @ 900 kHz; 0.33° @ 600 kHz, 0.20° @ 1600 kHz |
| Vertical Beam Width | 50° |
| Resolution Across Track | 400 kHz: 2.3 cm, 900 kHz: 1.5 cm, 600 kHz: 1.5 cm, 1600 kHz: 0.6 cm |
| TOWFISH | |
| Diameter | 9.5 cm (3.75 inches) |
| Length | 112 cm (44 inches) |
| Weight in Air | 20 kg (44 pounds) |
| Tow Cable Type | Coaxial up to 600m max length (will provide a typical operational depth down to 200m) |
| Max Depth Rating of Towfish | 200m |
| Material | Stainless Steel |
| Standard Sensors | Heading, Pitch, Roll, Pressure (Depth) |
| SPLASH-PROOF TOPSIDE PROCESSOR | |
| Power Input | 12-24 VDC or 115/230 VAC, 50/60 Hz |
| Connections | AC, DC, Ethernet (to laptop), Towfish |
| Hardware | Ruggedized splash-proof, drop & shock resistant laptop |
| Operating System | Windows® 7 |
| Acquisition Software | EdgeTech DISCOVER |
| SYSTEM OPTIONS | |
| | Keel weight, v-fin depressor wing, pole mount, quick change hull scan bracket |



For more information please visit EdgeTech.com

info@EdgeTech.com | USA 1.508.291.0057