

Data•Xchange brings wireless data transfer and embedded GPS positioning to your X•Series profilers. By creating an ad-hoc network between the instrument and a wireless-enabled laptop or PC, Data•Xchange is designed to improve the efficiency of data transfer.

Data•Xchange plugs directly into the standard connector on the end cap of X•Series profilers Base•X, Minos•X, and Plus•X. After accumulating profile data during each cast, Data•Xchange immediately establishes WiFi connection upon surfacing to efficiently relay the data to your PC.

Significant Features

- User-configured automated file transfer while instrument is being retrieved.
- Integrated GPS data
- Remote firmware updates
- Backwards compatible with all X•Series profilers

Key Benefits

- Fewer steps to transfer files from profiler to PC
- Faster download speed: **up to 40 times faster** than with an RS232 connection
- Less cycling of connectors prone to wear
- More efficient management of files



Network Method	WiFi Range	GPS (Accuracy)	Current Draw (mA)	Speed (kB/s)	Maximum Depth
Ad-hoc (Peer to Peer)	~20m	<5m	In Water: 50 Out of Water: 70	Up to 300	1000m

Step	User Action	Data Collection Workflow
1	Plug Data•Xchange into instrument.	Data•Xchange powers on profiler and defaults to ad-hoc network with factory settings.
2	Open SeaCast.	SeaCast automatically connects to profiler via Data•Xchange, and displays instrument type and sensor payload. SeaCast will automatically copy data from Data•Xchange to a local folder on the user's laptop or PC.
3	Perform profile.	Profiler recognizes it is in water, and begins logging cast to new file. Data•Xchange stores identical log file on its own SD card and powers down antenna to save power.
4	Retrieve instrument from water.	SeaCast automatically connects to the last device used and downloads latest cast files to default directory.
5	Repeat Steps 3 and 4 as required.	
7	Unplug Data•Xchange from instrument.	All data is stored on the non-volatile SD card, and will be available when the device is plugged back into any instrument.

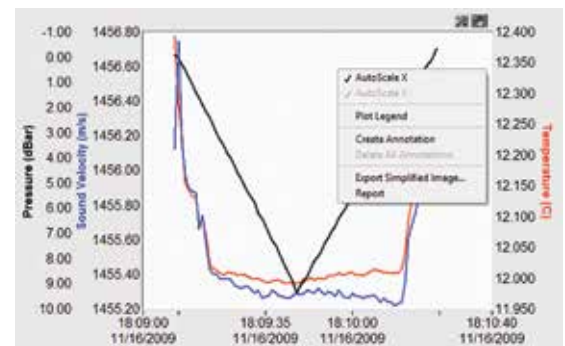
Ordering Information

Product Code	Name
DTX-MC8M-WG-10	Data•Xchange Wireless Device, Micro 8
CSE-0022	Base•X Shackle Extender
CSE-0023	Minos•X Shackle Extender
CSE-0024	Plus•X Shackle Extender

SeaCast provides an intuitive interface with X•Series instrumentation, offering easy instrument setup, data collection and management, and exporting tools.



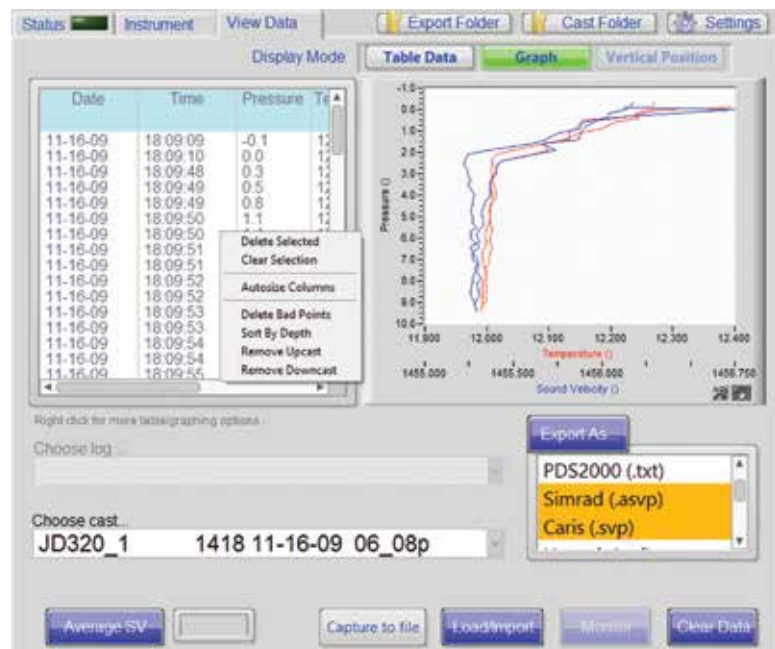
- Automated connection and workflow via wireless or cable
- Instrument and sensor details displayed
- Calibration certificates printed on demand
- GPS location via Data•Xchange or manual entry
- *Sample By* method and *Sample Rate* method selection



- Automatic or manual data filtering
- Offline access to existing casts for post-processing
- Show live data on multiple graphs concurrently
- Graph editing and annotation for export
- Automated data export functionality
- Simultaneous export to multiple data formats,

including:

- Hypack
- Quinsy
- Kongsberg
- Sonardyne
- PDS 2000
- CARIS
- CARIS (concatenated)
- HIPAP
- CSV
- Custom



Download SeaCast at www.amloceanographic.com/seacast

T: +1-250-656-0771 E: sales@AMLoceanographic.com

T: +1-800-663-8721 (NA) W: www.AMLoceanographic.com

F: +1-250-655-3655

2071 Malaview Avenue Sidney, British Columbia Canada, V8L 5X6

